

Using Compendium via RU-SCILS Citrix-Metaframe Presentation Server

Participants

1. Logon to RU-SCILS Citrix Metaframe Presentation Server:
<http://citrix.scilsnet.rutgers.edu/>

Rutgers New Brunswick/Piscataway Campus
SCILS School of Communication, Information and Library Studies

Log in

User name:

Password:

Advanced Options >>>

Log In

Welcome

Quick Help

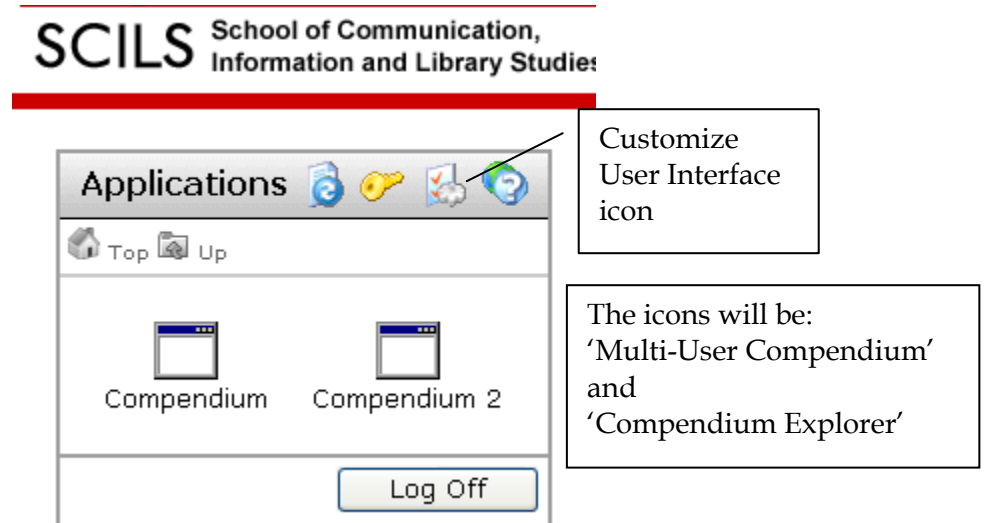
The SCILS Citrix
Users are RE...

Table of Contents

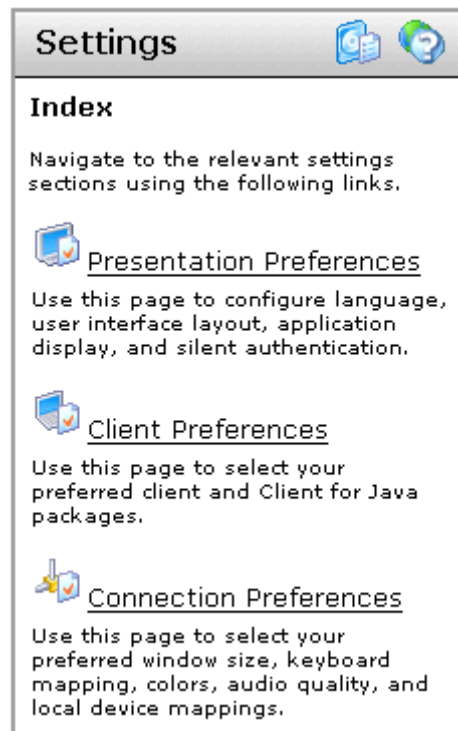
- [Logging](#)
- [Using C...](#)

- a. Enter your assigned Citrix username and password in the Log in box then click Log In.
 - i. You may have to install the ICA client – directions are on the citrix.scils.rutgers.edu page.
 - ii. In windows 2007 you may see a special prompt, just click run program.

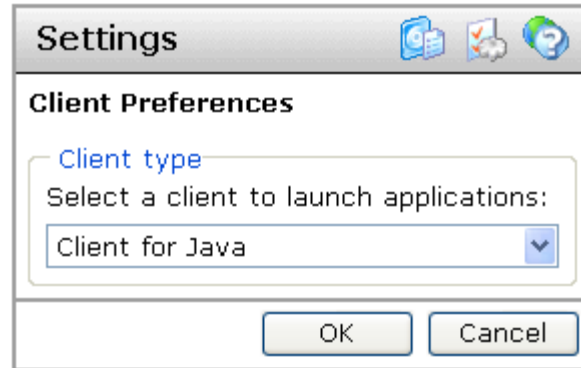
- b. After you log in for the first time, set the client type preference to client-for-java.



- i. In the Applications-window, click the customize-user-interface icon.

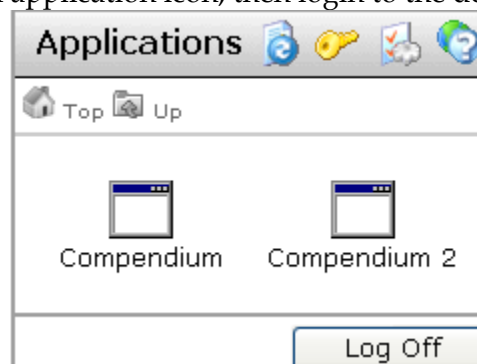


- ii. In the settings-window, click the client-preferences icon.



- iii. In client-preferences, choose client-for-java as the client type. Click 'ok'

2. Select the Compendium application icon, then login to the desired project.



Select
'Multi-User Compendium'

- a. Check to see that Compendium is set to MySQL and that the refresh rate is set to either 5 or 10 seconds.
- b. The following will be assigned
 - i. Project:
 - ii. Project Login Name:
 - iii. Project Login Password:
3. Insert 'The Commons' Map for that project into your view and begin mapping.
 - a. Go to 'View' on the toolbar
 - b. Select 'Find a Map/List'
 - c. Highlight map "The Commons"
 - d. Click Insert into view

Using Compendium via RU-SCILS Citrix-Metaframe Presentation Server

Mark Aakhus, Jon Oliver, Andy Mudrak: Rutgers, The State University of New Jersey
Al Selvin: Knowledge Media Institute/Open University (UK) and Verizon

How did the Compendium-Citrix approach come about?

We are putting together a laboratory here at RU-SCILS that supports research into communication and collaboration. We wanted to implement Compendium both as a tool for people to use and as a platform for examining issues of communication and collaboration. In particular, and along with others in the Compendium Community, we want to explore and advance the practice of collaborative mapping to support sense-making.

Why Citrix?

We discovered the viability of the Citrix-Metaframe Presentation Server in trying to solve what we understood to be a local problem of setting up Compendium in our environment. Sun Microsystems had donated servers and workstations to outfit our lab. It turned out that Compendium does not run on those servers and the workstations are terminals not desktops with their own cpu. To get around this barrier, we used our Citrix-Metaframe Presentation Server.

Citrix allows for 'virtual application streaming.' We use Citrix to, among other things, manage the number of site licenses for various software applications. Thus, while individuals may not have particular application software on their personal computers, they can still access and use the application via Citrix. In other words, the application exists on a server and a user goes to that application.

What does this mean for Compendium?

By setting up Compendium on one of our servers and thus making it an accessible application software via Citrix, we happened across a nice solution to various problems others had encountered in making Compendium a tool for multiple distributed participants. Prior efforts to use Compendium over the internet worked but were very slow because each Compendium application had to communicate across the internet with other Compendium applications. Prior efforts to use Compendium in local area network setups worked well but did not allow for the full sense of distributed participation. Compendium on Citrix gets the best of both worlds. It functions like Compendium used in a local area network because all the users are in a sense operating on our local server. It functions like Compendium over the internet because users can log in from anywhere to our Citrix presentation server. So, distributed participants + speed + ease of use = Distributed, collaborative mapping opportunities.

No, really, does it work just like Compendium installed on a local machine?

Compendium has much of the functionality of a locally installed application. But, there are currently some key functions that are not available. Most notably, drag-n-drop does not work like it does on a local application. Also, there are issues with setting up common directory on a server that will allow for shared file use. We are working on these and would seek insight from the Compendium Community on ways to solve this. Open opportunities include: simplifying logon, including drag-n-drop, importing/exporting files, groupware functionality, protocols and procedures for managing shared compendium.