

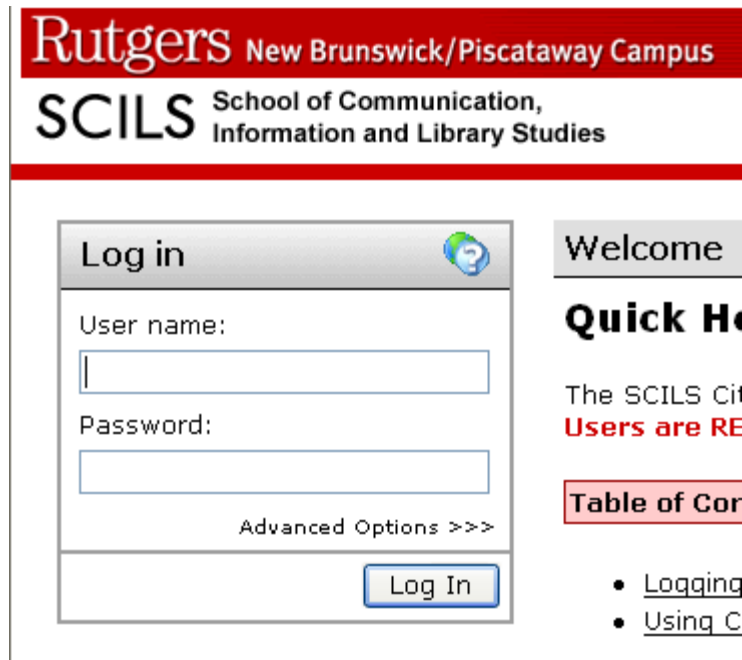
Using Compendium via RU-SCILS Citrix-Metaframe Presentation Server

Most of these instructions are first time setup instructions.

Subsequent login in to Compendium via Citrix will only require logging into the Metaframe Presentation Server and then logging into the relevant Compendium Project.

1. Logon to RU-SCILS Citrix Metaframe Presentation Server:

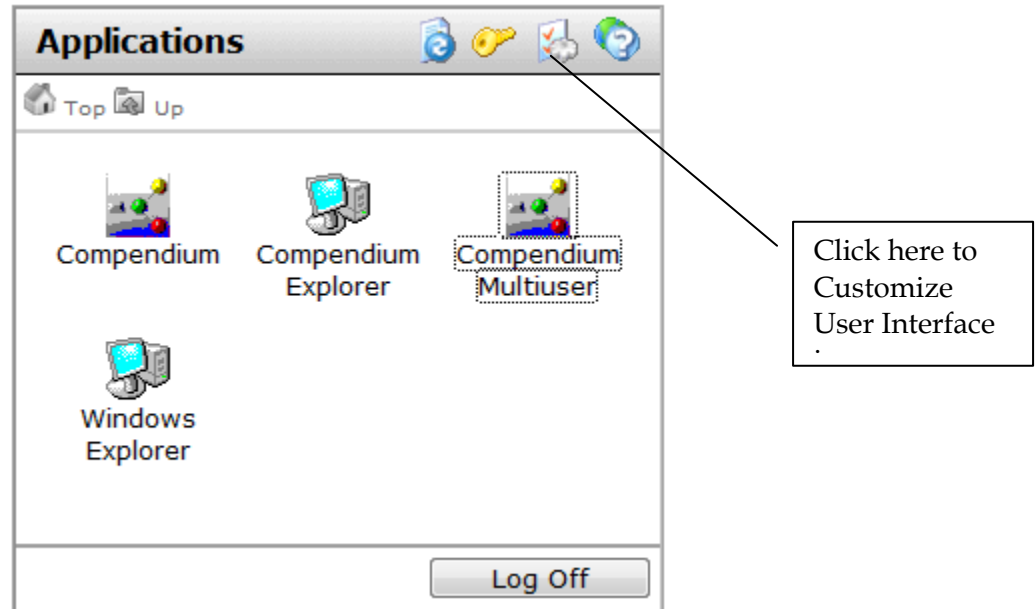
<http://citrix.scilsnet.rutgers.edu/>



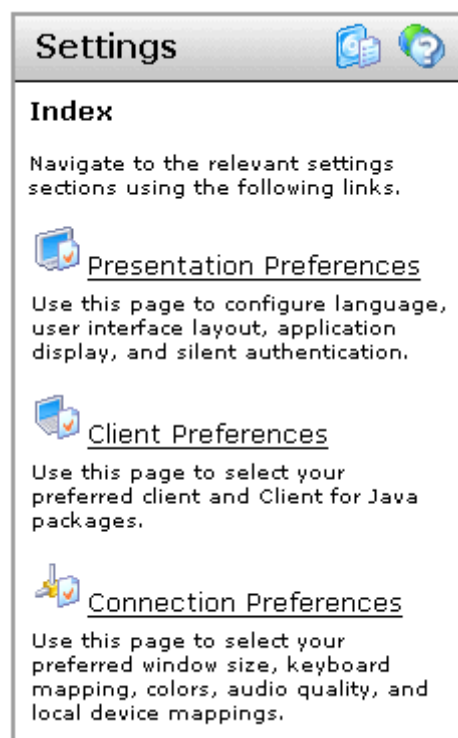
The screenshot shows the login interface for the Rutgers SCILS Citrix Metaframe Presentation Server. The header is red and contains the Rutgers logo and the text 'New Brunswick/Piscataway Campus' and 'SCILS School of Communication, Information and Library Studies'. Below the header is a 'Log in' box with a 'User name:' field, a 'Password:' field, a 'Log In' button, and a link for 'Advanced Options >>>'. To the right of the login box is a 'Welcome' section with a 'Quick Help' link, a message 'The SCILS Citrix Users are RE...', and a 'Table of Contents' link with a list of links: 'Logging' and 'Using C...'.

- a. Enter your assigned Citrix username and password in the Log in box then click Log In.
 - i. You may have to install the Metaframe Presentation Server client – directions are on the citrix.scils.rutgers.edu page.
 1. The client is available in the Message Center at the bottom of the page.
 - ii. When you run the client in windows 2007 you may see a special prompt, just click run program until it runs.

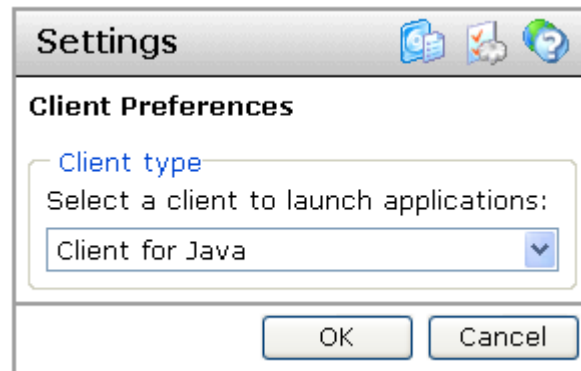
- b. After you log in to Citrix for the first time, **set the client type preference to client-for-java**.
 - i. In the Applications-window, click the **customize-user-interface** icon.



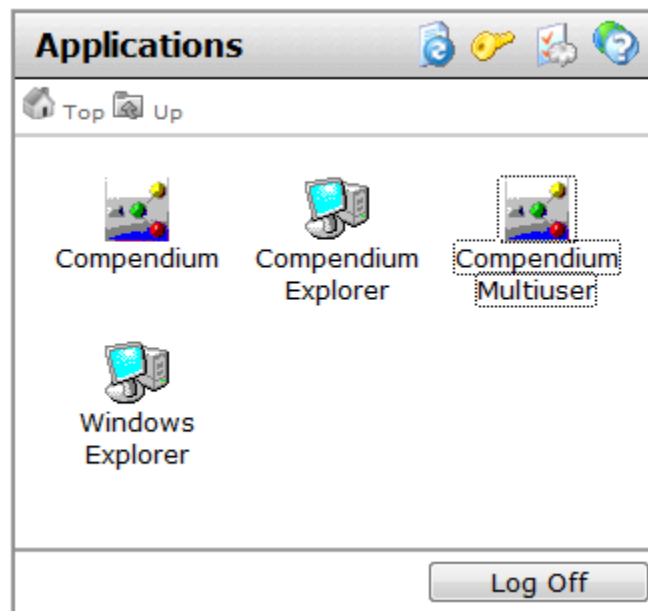
- ii. In the settings-window, click the **client-preferences** icon.



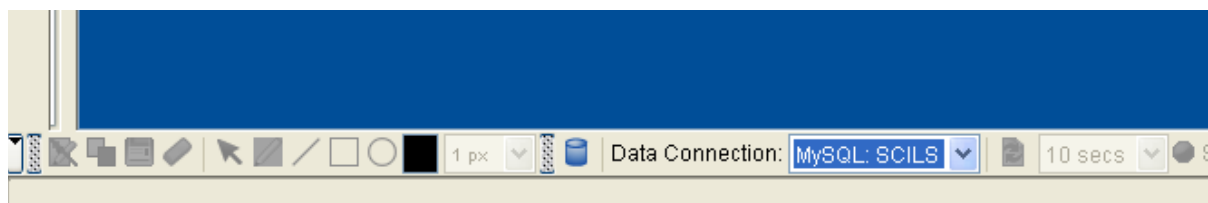
- iii. In client-preferences, choose client-for-java as the client type. Click 'ok'



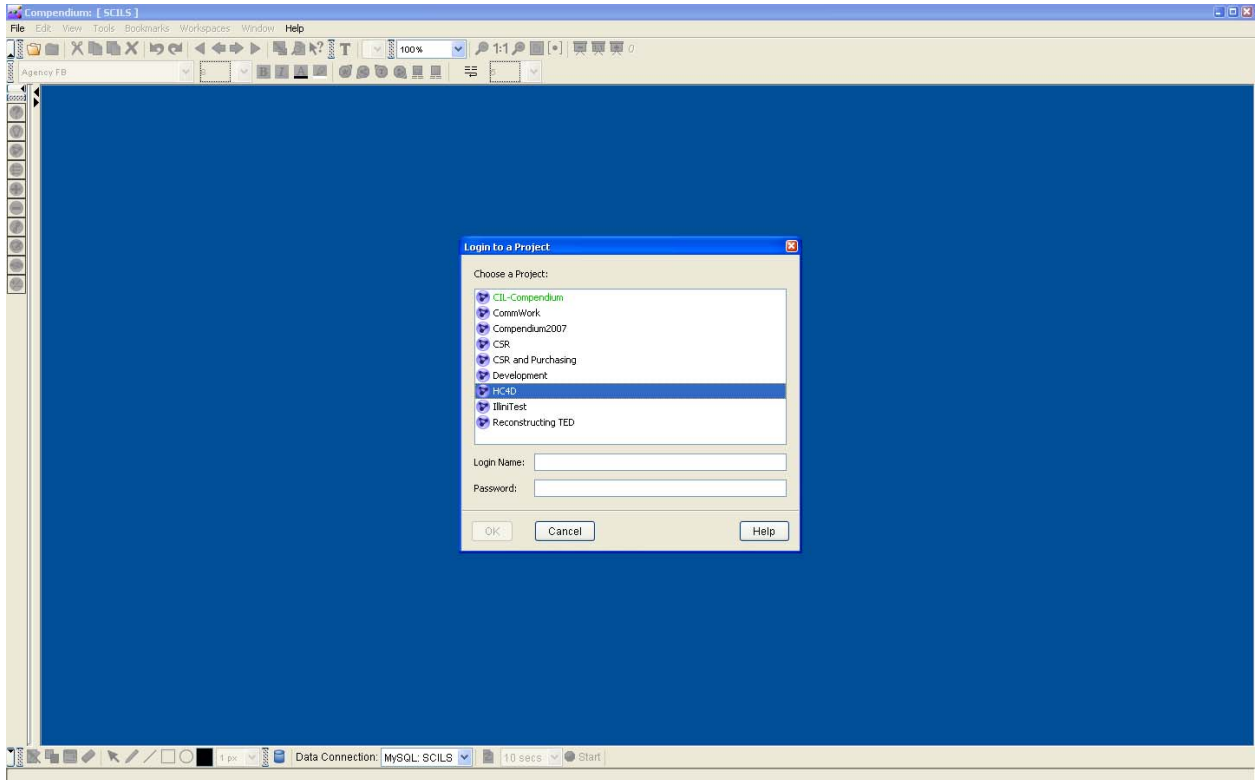
2. Select the 'Compendium Multiuser' application icon, then login to the desired project.



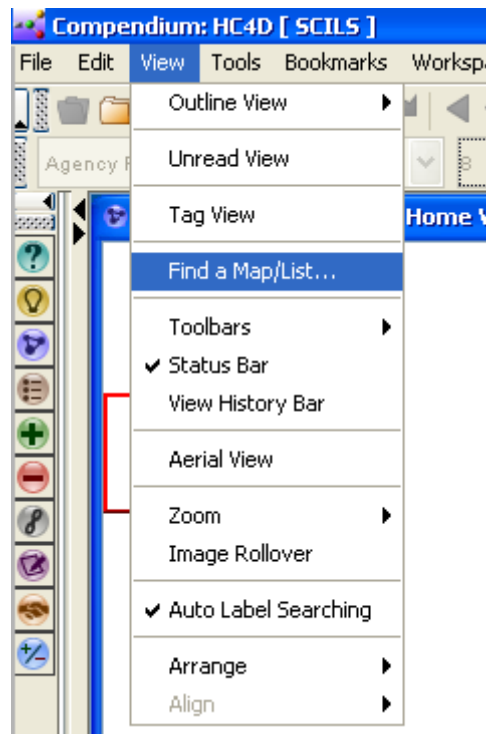
- a. Check to see that Compendium is set to **MySQL** and that the **refresh rate** is set to either 5 or 10 seconds. (Less than 5 second refresh is annoying.)



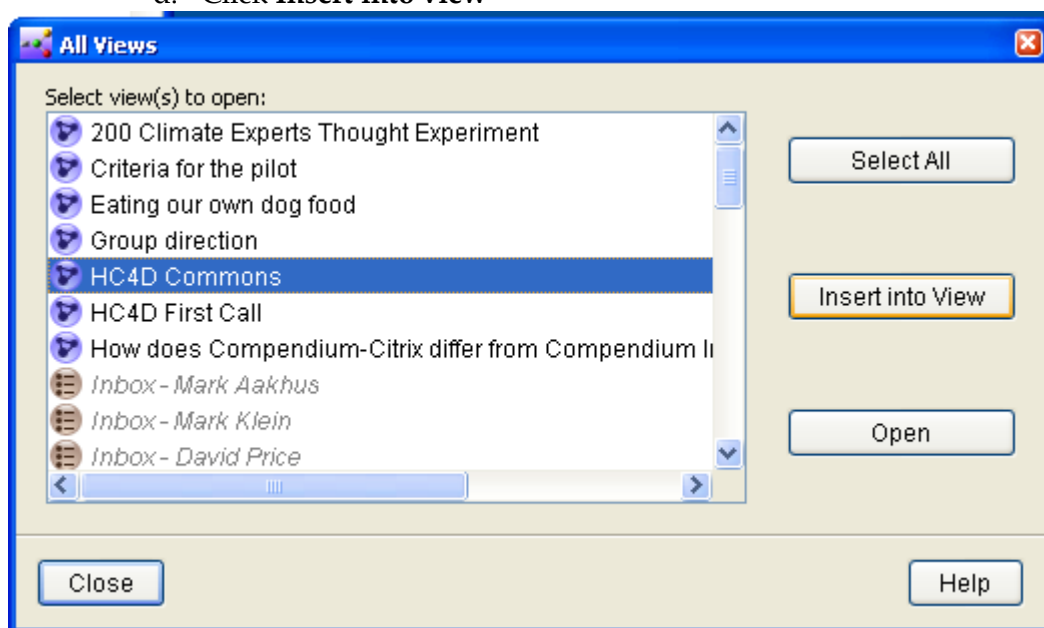
- b. Select the relevant project
 - i. Project: **HC4D**
 - ii. Project Login Name: use assigned username
 - iii. Project Login Password: use assigned login



3. Insert 'The Commons' Map for that project into your view and begin mapping. The commons map will be the shared map among all the participants in the project. Anything anyone does to the map will affect everyone.
 - a. Go to 'View' on the toolbar
 - b. Select 'Find a Map/List'



- c. Highlight map: **HC4D Commons**
- d. Click **Insert into view**



Using Compendium via RU-SCILS Citrix-Metaframe Presentation Server

Mark Aakhus, Jon Oliver, Andy Mudrak: Rutgers, The State University of New Jersey
Al Selvin: Knowledge Media Institute/Open University (UK) and Verizon

How did the Compendium-Citrix approach come about?

We are putting together a laboratory here at RU-SCILS that supports research into communication and collaboration. We wanted to implement Compendium both as a tool for people to use and as a platform for examining issues of communication and collaboration. In particular, and along with others in the Compendium Community, we want to explore and advance the practice of collaborative mapping to support sense-making.

Why Citrix?

We discovered the viability of the Citrix-Metaframe Presentation Server in trying to solve what we understood to be a local problem of setting up Compendium in our environment. Sun Microsystems had donated servers and workstations to outfit our lab. It turned out that Compendium does not run on those servers and the workstations are terminals not desktops with their own cpu. To get around this barrier, we used our Citrix-Metaframe Presentation Server.

Citrix allows for 'virtual application streaming.' We use Citrix to, among other things, manage the number of site licenses for various software applications. Thus, while individuals may not have particular application software on their personal computers, they can still access and use the application via Citrix. In other words, the application exists on a server and a user goes to that application.

What does this mean for Compendium?

By setting up Compendium on one of our servers and thus making it an accessible application software via Citrix, we happened across a nice solution to various problems others had encountered in making Compendium a tool for multiple distributed participants. Prior efforts to use Compendium over the internet worked but were very slow because each Compendium application had to communicate across the internet with other Compendium applications. Prior efforts to use Compendium in local area network setups worked well but did not allow for the full sense of distributed participation. Compendium on Citrix gets the best of both worlds. It functions like Compendium used in a local area network because all the users are in a sense operating on our local server. It functions like Compendium over the internet because users can log in from anywhere to our Citrix presentation server. So, distributed participants + speed + ease of use = Distributed, collaborative mapping opportunities.

No, really, does it work just like Compendium installed on a local machine?

Compendium has much of the functionality of a locally installed application. But, there are currently some key functions that are not available. Most notably, drag-n-drop does not work like it does on a local application. Also, there are issues with setting up common directory on a server that will allow for shared file use. We are working on these and would seek insight from the Compendium Community on ways to solve this. Open opportunities include: simplifying logon, including drag-n-drop, importing/exporting files, groupware functionality, protocols and procedures for managing shared compendium.